

INSTALLATION INSTRUCTIONS
OF THE
DUCT WORK ADAPTER KIT
FOR BIRD
MODELS 8570/71 and 8572/73

This sheet covers the procedure for installing the Duct Work Adapter Kit, P/N 8572-078, onto the Bird Model 8570/71 or 8572/73 TERMALINE® Load Resistor.

Also included are precautions that must be observed in construction of duct work and attachment to the adapter. A significant amount of back pressure can seriously impede the cooling operation of the load. Use the following precautions as a guideline when fabricating duct work. If there is any question or uncertainty, consult the factory.

PRECAUTIONS

- a. Duct work must be as large or larger than the adapter; never smaller.
- b. Duct work must not have any sharp bends that would restrict air flow and create back pressure. If directional change of the duct work is necessary, use as large a radius as possible.
- c. Keep the duct work as short as possible. If long lengths of duct work are required, the cross sectional area of duct work must be increased accordingly. (Consult with the factory.)
- d. Do not use any restrictive grillwork which might substantially reduce air flow.

INSTALLATION

Follow the steps below for simple installation of the duct work adapter.

- a. Unscrew the eight #8-32 pan head screws that secure the back and right side mid grillwork panels (air output panels; see drawing). Remove these panels and store for possible future use.
- b. Place the adapter over the corner framework, exposed, between the side and rear air output openings. Position the adapter over the openings and align the holes in the adapter's mounting flanges with the tapped holes in the outer framework of the Load. These are the holes that were used to secure the vent grillwork.
- c. Replace four #8-32 pan head screws through the holes in the mounting flange. Screw them tightly into the threaded holes in the framework to secure adapter in place.

Continued

d. Unscrew four #8-32 pan head screws, that are adjacent to the exhaust grilles on the front and left side panels. Completely remove two of the screws on one side of each grille. The two screws on the opposite side of each grille need to be unscrewed only about 1/16 of an inch. Slide the notch of each exhaust grille plate under the head of the partially loosened screw. Replace the other two, on the opposite side, through the slots in the plate. Tighten all four screws in each plate. Note - One or both plates in step d. may be omitted if only partial venting is desired.

Installation of the adapter is now completed and ready for connection of the duct work. The duct work may be attached with sheet metal screws, nut and bolt sets, clamps or any suitable method as the need requires. If necessary, drill holes in the one inch connecting flange where needed.

This Duct Work Adapter Kit includes the Duct Adapter and two Grille Coverplates.

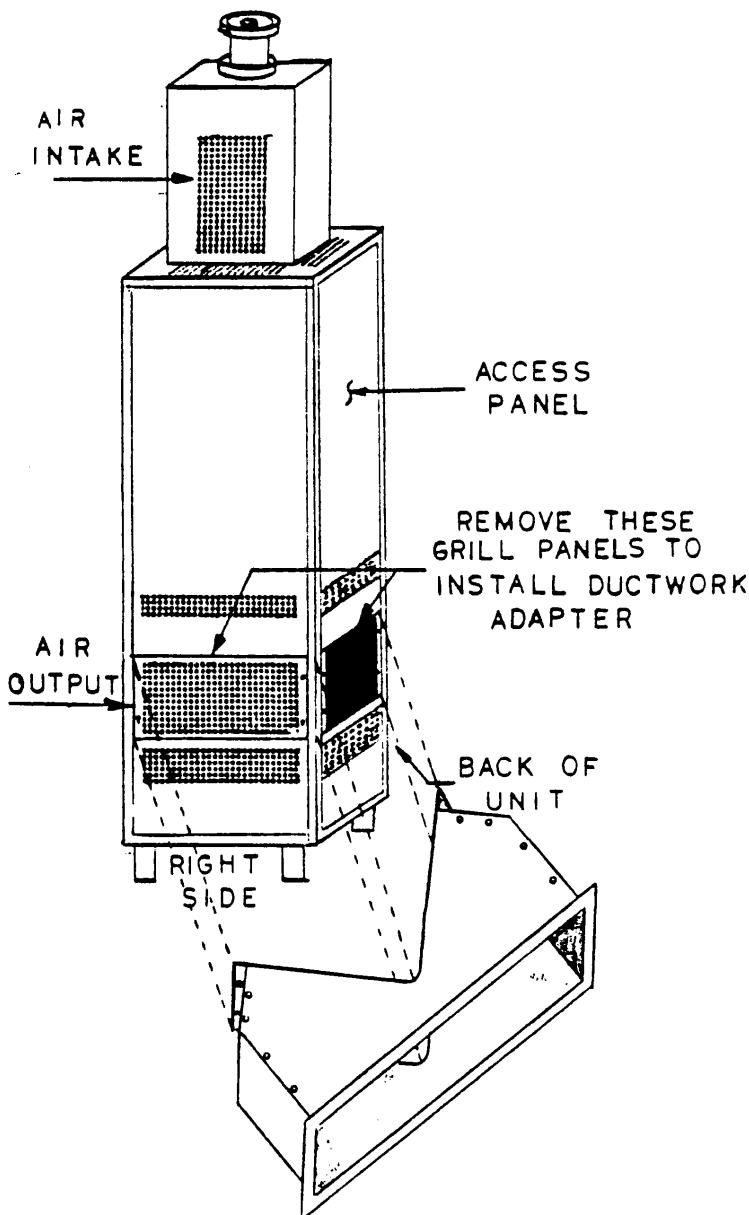


Figure 1. Panel Removal Location (Series 8570 to 8573).

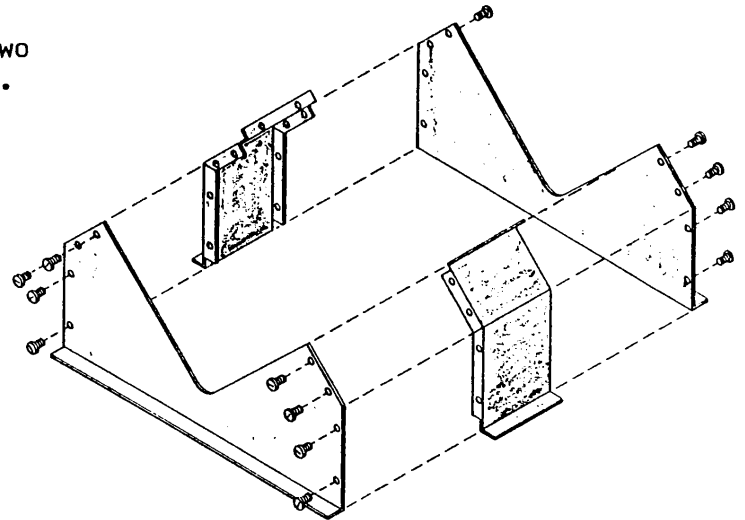


Figure 2. Assemble Adapter as Shown.

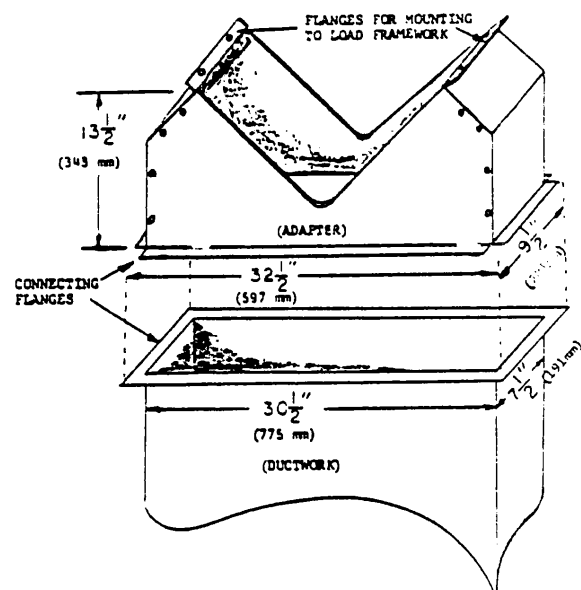


Figure 3. Duct Work Adapter and Typical Duct Work Connection.