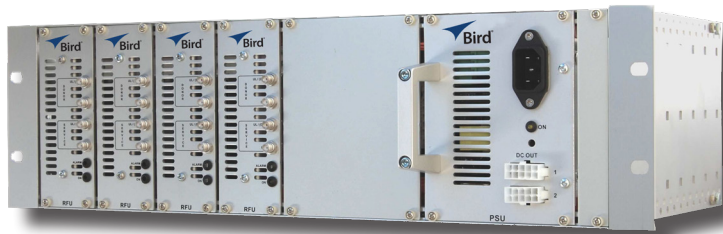


Bird repeaters units are high performing, variable bandwidth amplifiers. The repeaters are offered as rack mount, IP65 chassis or space conservative configurations. The repeaters can be used as standalone units to provide coverage to smaller spaces or used in conjunction with the Bird active fiber DAS to provide coverage to larger spaces such as office buildings, hospitals and sporting venues.



KEY FEATURES

- Radio access technology agnostic
- Completely software monitored and controlled
- Rack mount and wall mount options
- RoHS compliant

GENERAL SPECIFICATIONS

	DHR800	DLR600	DMR400	DMR600	DMR800
Gain (dB)	50-85	40-70	50-80	50-80	50-85
Bandwidth (MHz)	Up to 35*	Up to 35*	Up to 35*	Up to 35*	Up to 35*
Hardware Delay (μ)	<7	<7	<7	<7	<7
Noise Figure (dB)	<5	<5	<5	<5	<5
Power Supply (VAC)	85-265	100-240	85-265	100-240	85-265
Optional (VDC)		12-30	12-30	12-30	
Weight (Kg/lbs)	<15.2/34	<1.4/3	<0.7/1.5	<1.4/3	<15.2/34
Power Consumption (W)	<130	<35	<35	<35	<35
Dimension (WxDxH)			2 Rack Slots		
Inches	11.5x5.1x27.6	11.8x2x8.3		11.8x2x8.3	11.5x5.1x27.6
mm	300x130x700	300x50x210		300x50x210	300x130x700
Temperature Range °F (°C)	-13 to +131 (-25 to +55)		32 to +104 (0 to +40)		-13 to +131 (-25 to +55)
Temperature Range °F (°C) AC			32 to +104 (-25 to +55)		32 to +104 (-25 to +55)
Temperature Range °F (°C) DC			-13 to +131 (-25 to +55)		-13 to +131 (-25 to +55)
RF output-Duplex	SMA, N, DIN, 4.3-10	N	SMA, simplex only	SMA, N, DIN, 4.3-10	SMA, N, DIN, 4.3-10
Housing	IP65	IP42	-	IP42	IP65

*Bandwidth limit varies based on configuration

DMR400 products require DMF401 chassis and power supply - quoted separately

Repeater Units

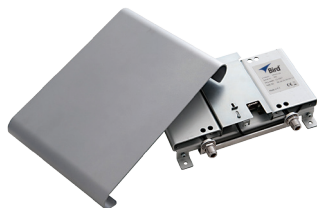
DHR, DLR and DMR Series

FREQUENCY BANDS

BAND	3GPP BAND	UPLINK	DOWNLINK	Compliance	Product & Max Output (dBm)						
DAB	-	-	174-240	ETSI	-	-	-	-	-	-	DMR 806
											- 18 DL
TETRA, Public Safety	-	380-385	390-395	ETSI	DHR 801		DMR 401				DMR 801
					20 UL 26 DL	- -	19 UL 19 DL	- -			19 UL 19 DL
TETRA, Commercial	-	410-415	420-425	ETSI	DHR 802		DMR 402				DMR 802
					20 UL 26 DL	- -	19 UL 19 DL	- -			19 UL 19 DL
TETRA, Commercial	-	415-420	425-430	ETSI	DHR 812		DMR 403				DMR 803
					20 UL 26 DL	- -	19 UL 19 DL	- -			19 UL 19 DL
CDMA450	-	458-460	468-470	ETSI	DHR 811		DMR 411				DMR 811
					18 UL 26 DL	- -	19 UL 19 DL	- -			19 UL 19 DL
700 Lower ABC	12	698-716	728-746	-			DMR 405				
					- -	- -	25 UL 25 DL	- -			- -
700 Upper C	13	776-787	746-757	-			DMR 404				
					- -	- -	25 UL 25 DL	- -			- -
800 SMR IDEN	27	806-824	851-869	-	DHR 807		DMR 407	DMR 607			DMR 807
					25 UL 33 DL	- -	25 UL 25 DL	25 UL 25 DL			25 UL 25 DL
850 CELLULAR	5	824-849	869-894	-	DHR 808		DMR 408	DMR 608			DMR 808
					25 UL 33 DL	- -	25 UL 25 DL	25 UL 25 DL			25 UL 25 DL
GSM-R 900	-	876-880	921-925	ETSI	DHR 810		DMR 410	DMR 610			DMR 810
					19 UL 26 DL	- -	19 UL 19 DL	19 UL 19 DL			19 UL 19 DL
E-GSM 900	8	880-915	925-960	ETSI	DHR 809	DLR 609	DMR 409	DMR 609			DMR 809
					19 UL 26 DL	13 UL 13 DL	19 UL 19 DL	19 UL 19 DL			19 UL 19 DL
DCS1800	3	1710-1775	1805-1880	ETSI	DHR 818	DLR 618	DMR 418	DMR 618			DMR 818
					21 UL 28 DL	13 UL 13 DL	19 UL 19 DL	19 UL 19 DL			19 UL 19 DL
PCS 1900	25	1850-1915	1930-1995		DHR 819		DMR 419	DMR 619			DMR 819
					25 UL 33 DL	- -	25 UL 25 DL	25 UL 25 DL			25 UL 25 DL
AWS 2100	4	1710-1755	2110-2155		DHR 820		DMR 420	DMR 620			DMR 820
					25 UL 33 DL	- -	25 UL 25 DL	25 UL 25 DL			25 UL 25 DL
UMTS 2100	1	1920-1980	2110-2170	3GPP	DHR 821	DLR 621	DMR 421	DMR 621			DMR 821
					21 UL 30 DL	15 UL 15 DL	20 UL 23 DL	20 UL 23 DL			20 UL 23 DL



DMR800 & DHR800



DLR600 & DMR600



DMR400



The RF Experts • 30303 Aurora Rd. • Solon, OH 44139 • 866.695.4569 • www.birdrf.com

Bird is not responsible for omissions or errors. Specifications subject to change without notice.



Repeater Units-DMR400-800-DHR800-DLR-Series-DS-07032019