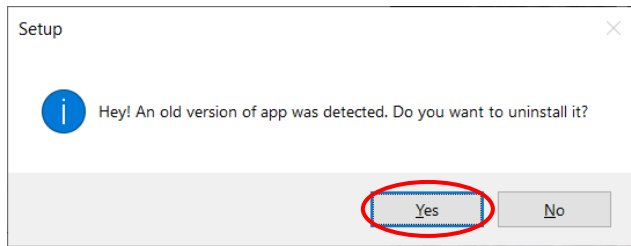
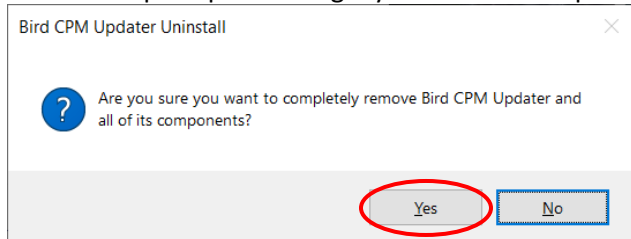


### Procedure to update CPM firmware – 7-9-2021

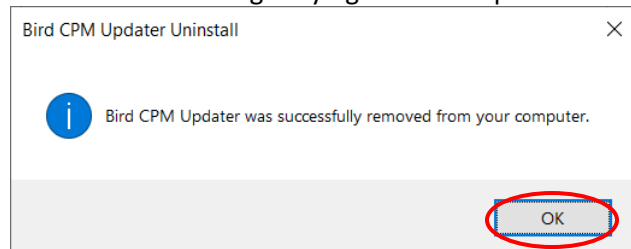
1. Download the **CPM Field Updater ver.3.10 (w/MIB)** firmware from the website
    - a. Go to the following link: <https://birdrf.com/Products/Test%20and%20Measurement/RF-Power-Monitors/Channel%20Power%20Monitor/3141-Channel-Power-Monitor.aspx>
    - b. Scroll down the page to **Downloads:** and click on **CPM Field Updater ver. 3.10 (w/MIB)** to download to your PC
  2. Unzip the **CPM-Field-Updater.zip** file. Inside the **CPM-Field-Updater** folder you will have **BirdCPMUpdater\_installer.exe** and **BTG-CPM-MIB.mib** in the folder
  3. Disconnect the Input Power from rear of 3141 panel
  4. Connect PC to the USB port on front of 3141 and wait for it to enumerate.
  5. Launch **BirdCPMUpdater\_installer.exe** from your PC.
  6. You may see a prompt saying an older version of the app was detected asking if you want to uninstall it. Click **Yes**. If you don't have an older version go to Step 9.
- NOTE: If you are updating multiple 3141 units you only need to update the CPM Driver once. In this case jump to step 15.**



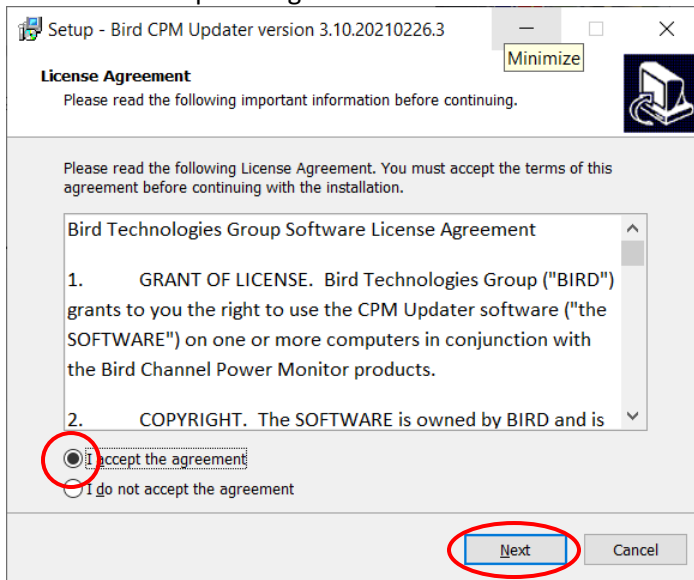
7. You will be prompted asking if you want to completely remove the app. Click **Yes**.



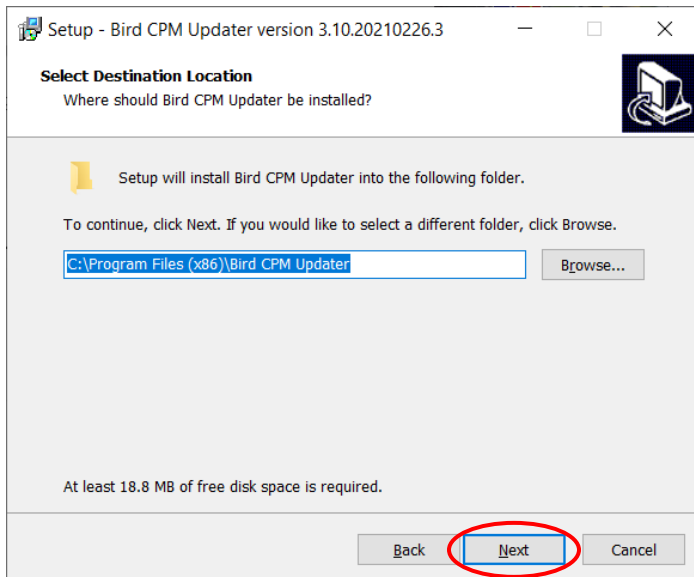
8. You will see a message saying the CPM Updater was removed from your computer. Click **OK**.



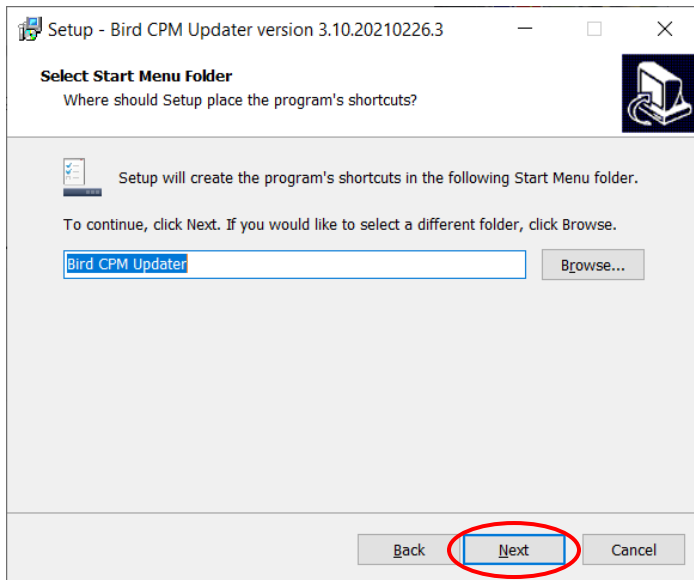
9. Check the I accept the agreement and click **Next**



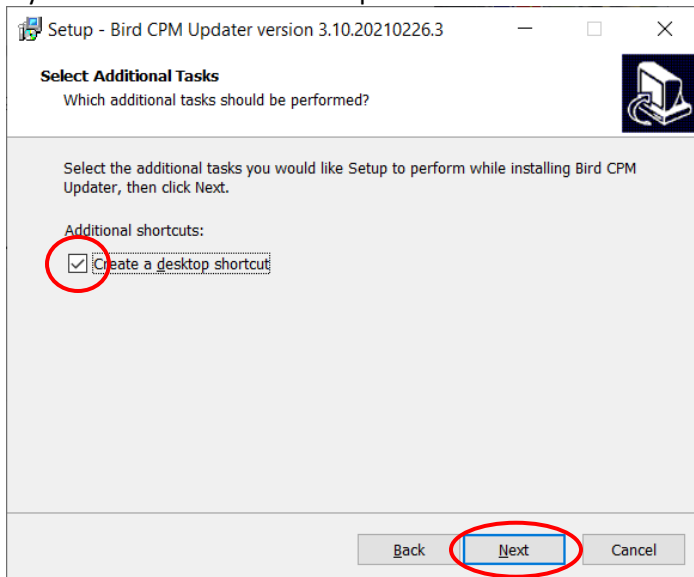
10. Click **Next**



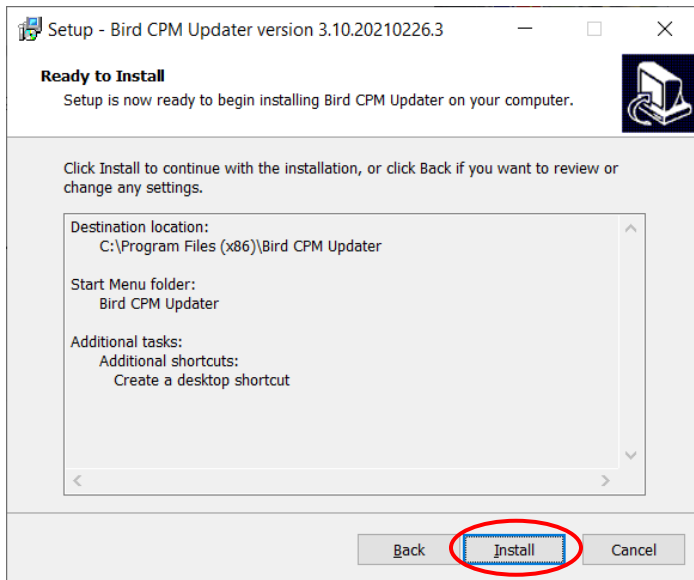
11. Click **Next**



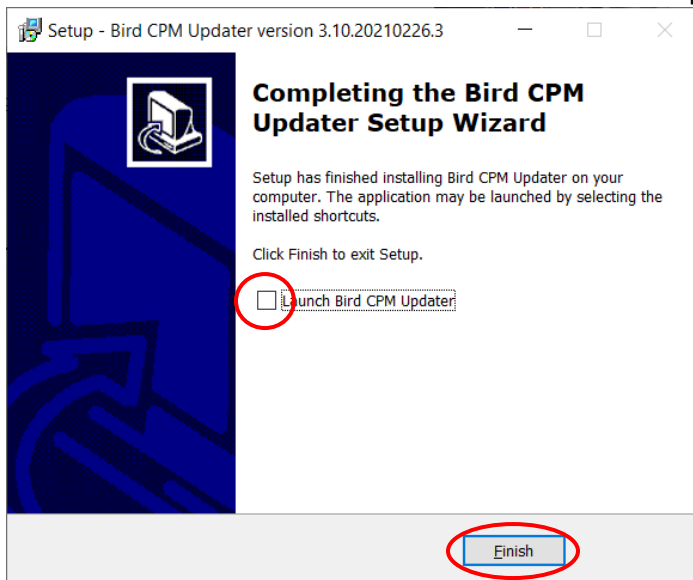
12. If you want to create a desktop shortcut **check the box** and click **Next**.



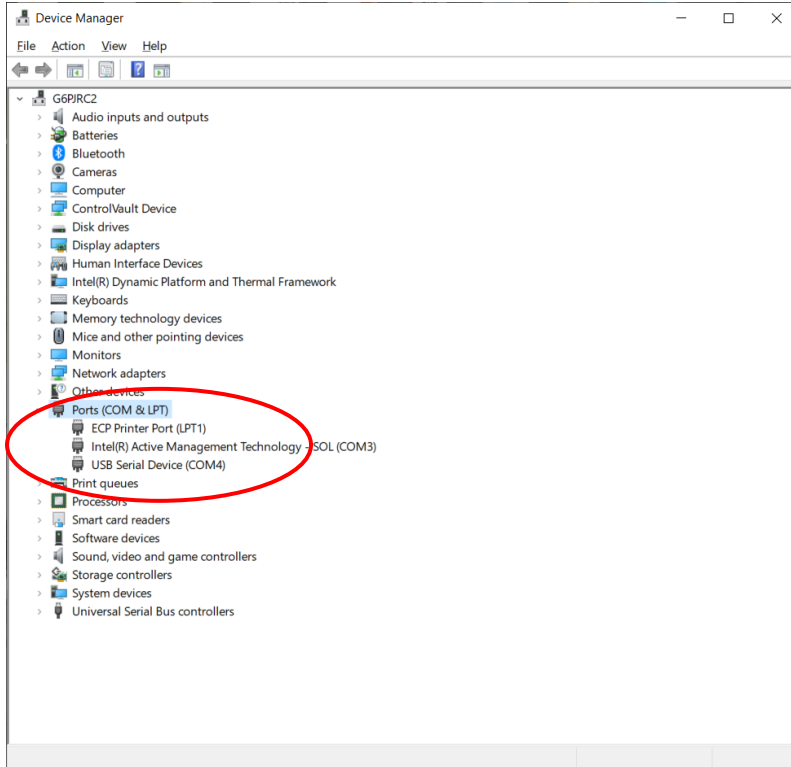
13. Click **Install**



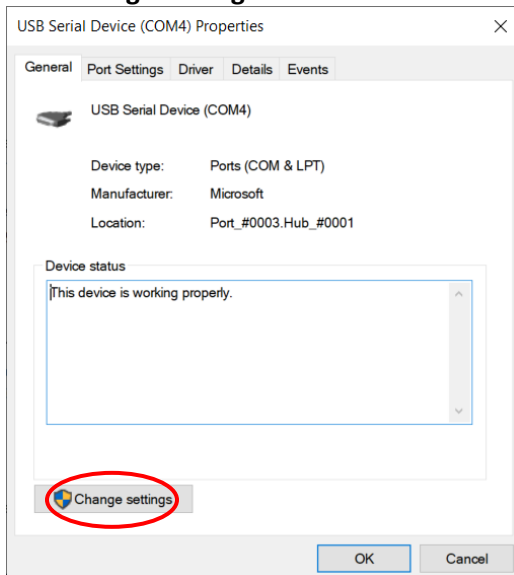
14. At the end of the installation it asks if you want to Launch Bird CPM Updater. **Uncheck the box** and click **Finish**. You **DO NOT** want to Launch the CPM Updater.



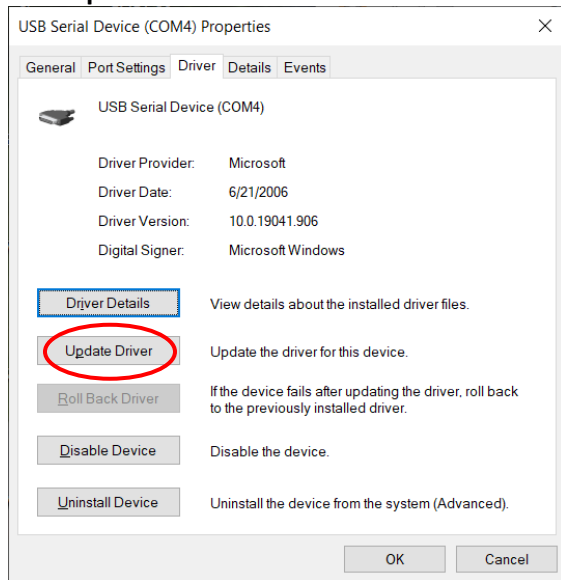
15. Get into the Device Manager and click on **Ports (COM & LPT)**, then Click on **USB Serial Device**
- a. **Note: If it already shows Arduino Due Programming Port skip to Step 21**



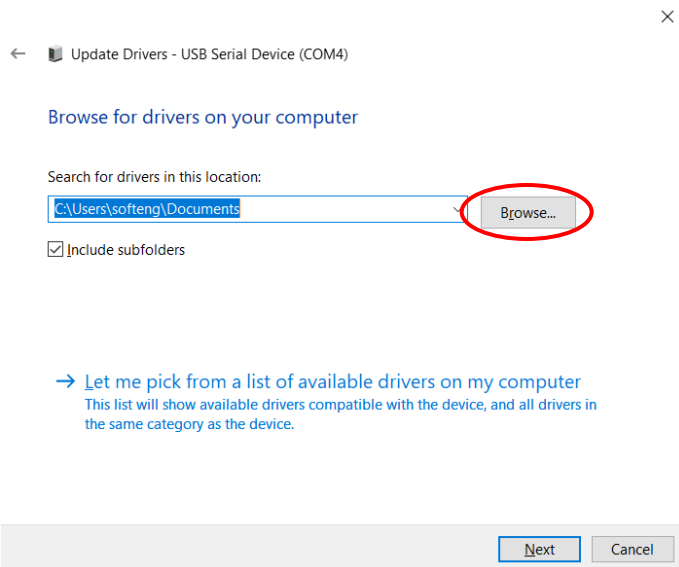
16. Click **Change settings**



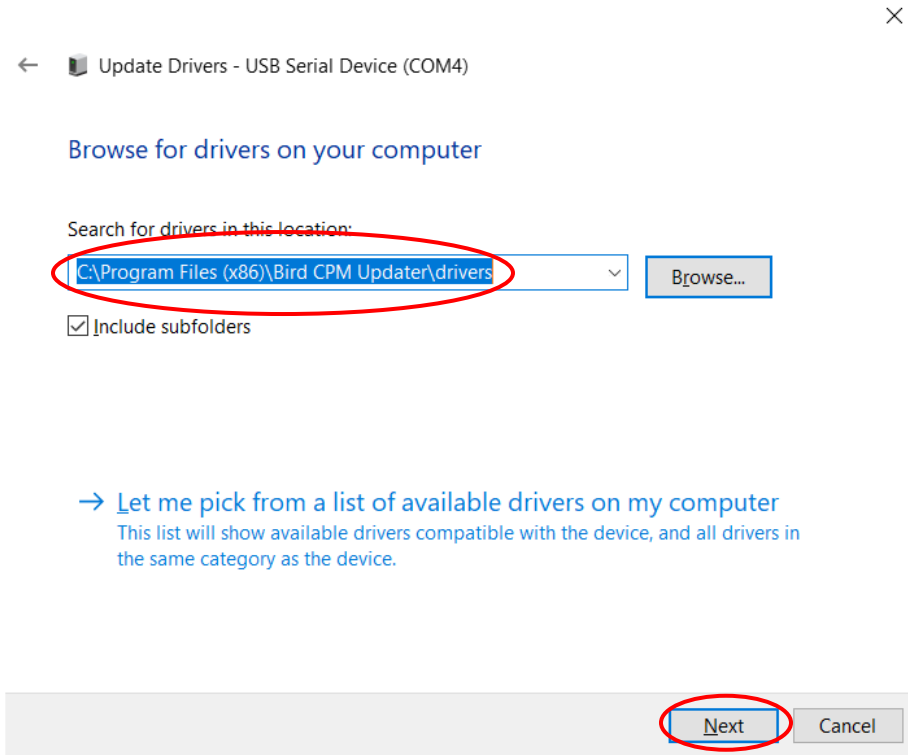
## 17. Click **Update Driver**



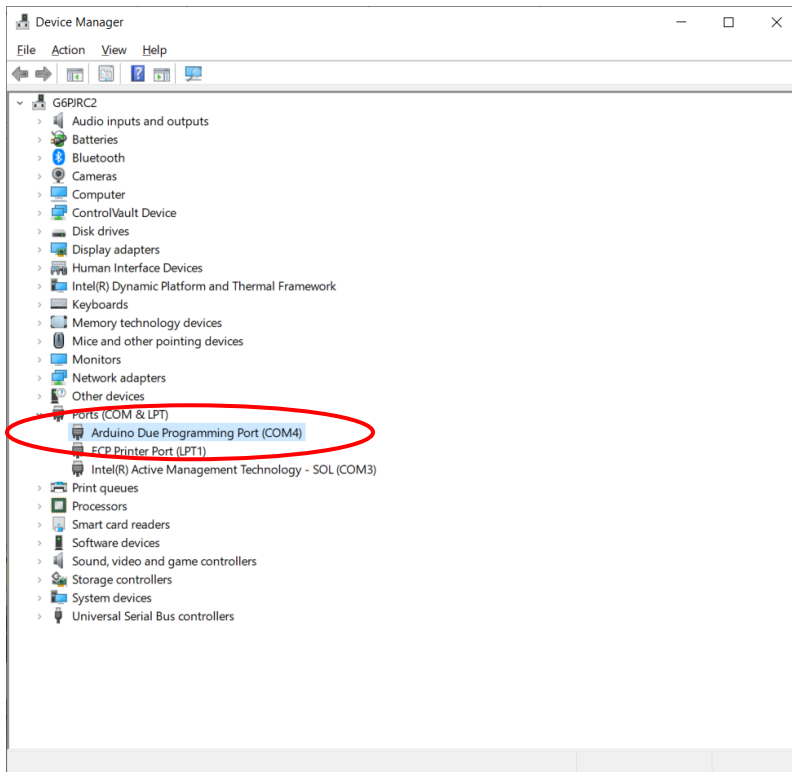
## 18. Click **Browse**



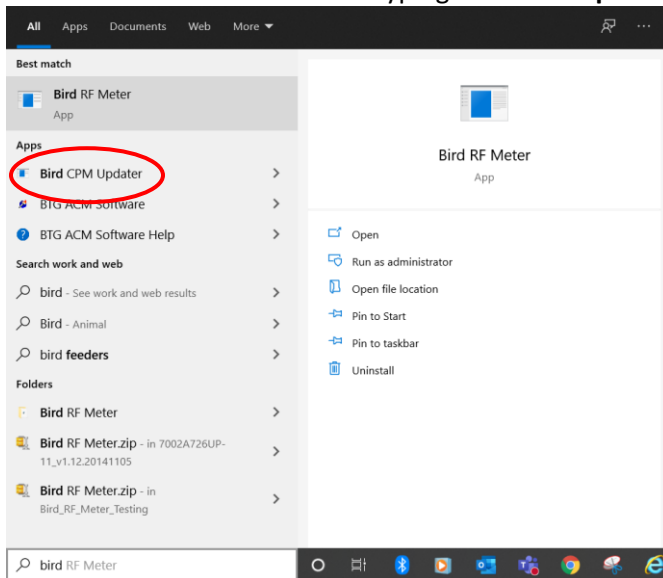
19. Browse to **C:\Program Files (x86)\Bird CPM Updater\drivers** then click **Next**



20. When completed **Arduino Due Programming Port** will show.



21. Go to the Start menu and start typing **Bird CPM Updater** and click to install.



22. It will begin to install and take about 10 minutes so be patient. Window closes upon completion.



```
Bird CPM Updater
Preparing for Install
Files Ready
Preparing to Update Memory
55%|#####3 | 52/94 [00:10<00:08, 5.00it/s]
```